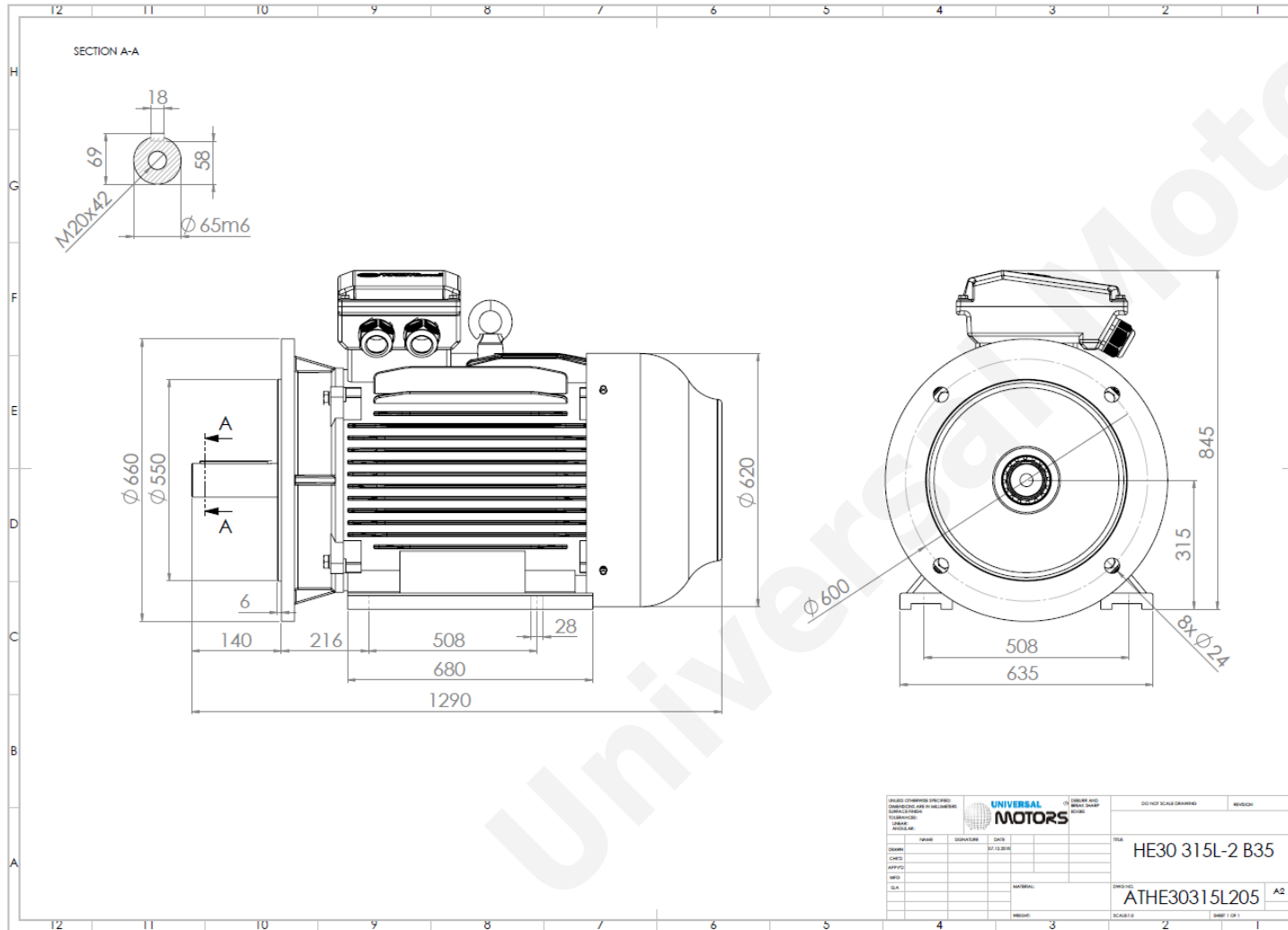




# TECHNICAL DATA

Three Phase Electric Motors - Cast Iron Frame  
 HE30 315L-2 IE2  
 160 kW / 220 Cv  
 2975 RPM



|                             |                        |
|-----------------------------|------------------------|
| Motor type:                 | <b>HE30 315L-2 IE2</b> |
| Output:                     | <b>160 kW / 220 Cv</b> |
| Speed (min <sup>-1</sup> ): | <b>2975 RPM</b>        |
| Frequency:                  | <b>50 Hz</b>           |
| Voltage:                    | <b>400 V</b>           |
| Current:                    | <b>268 A</b>           |
| Power factor (Cos Ø):       | <b>0.91</b>            |
| Poles:                      | <b>2</b>               |
| Insulation class:           | <b>F</b>               |
| Temperature rise Class:     | <b>B</b>               |
| Efficiency 50%:             | <b>94.0 %</b>          |
| Efficiency 75%:             | <b>95.1 %</b>          |
| Efficiency 100%:            | <b>94.8 %</b>          |
| Torque:                     | <b>514 N.m</b>         |
| Tstarting/Tnominal:         | <b>2.0</b>             |
| Istarting/Inominal:         | <b>7.1</b>             |
| Tmaximum/Tnominal:          | <b>2.2</b>             |
| Noise:                      | <b>81 Db(A)</b>        |
| Weight:                     | <b>990 Kg</b>          |
| Bearing DE:                 | <b>6317 C3</b>         |
| Bearing NDE:                | <b>6317 C3</b>         |

**Regime - S1**

**Altitude - 1000m**

**Environment Temperature - 40°C**

**CONTACTS:**

UNIVERSAL MOTORS Tel: +351 252 299 080  
 Rua de São Brás,745 Fax: +351 252 299 089  
 4480-782 VILA DO CONDE Mail: [geral@universalmotors.pt](mailto:geral@universalmotors.pt)

\* References applied only in the UK